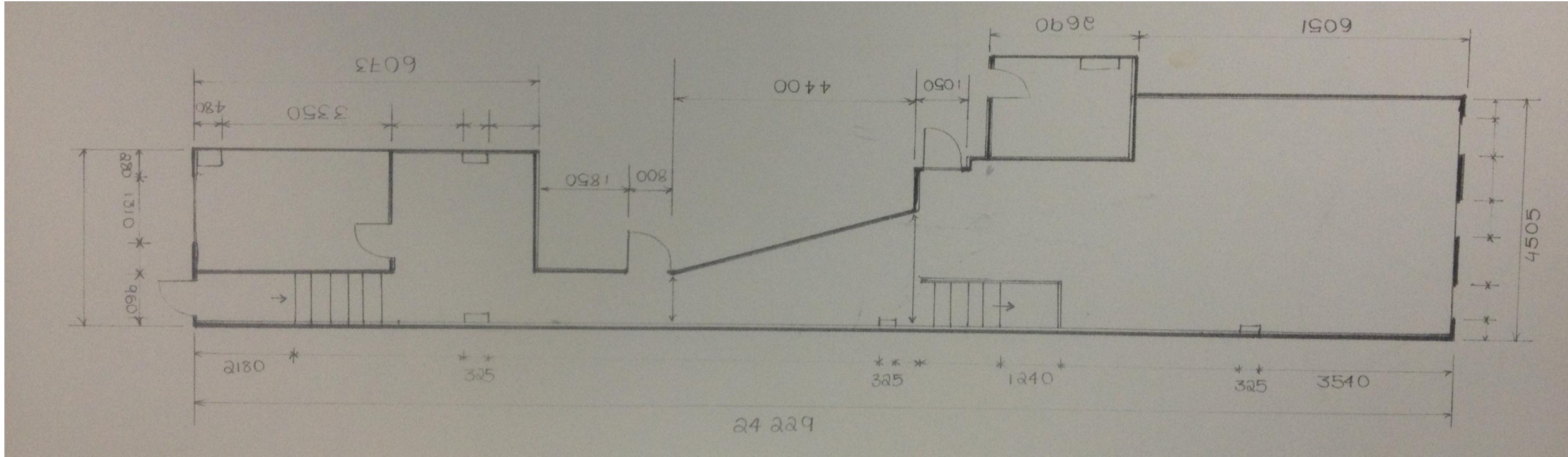




## Cross Care Food Centre at Longford Lane

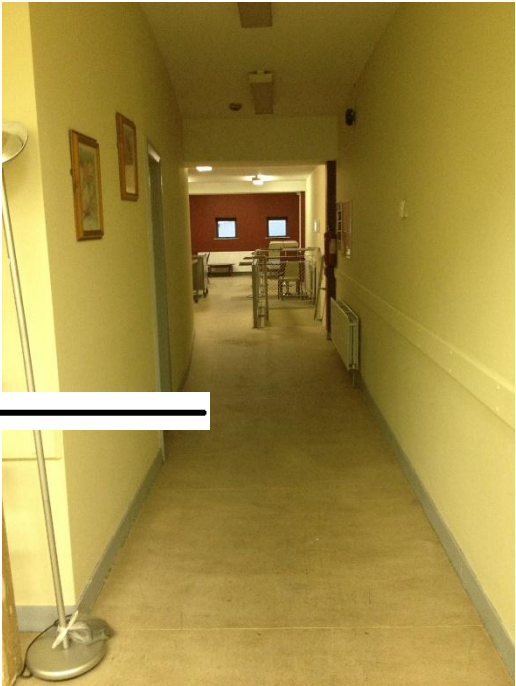
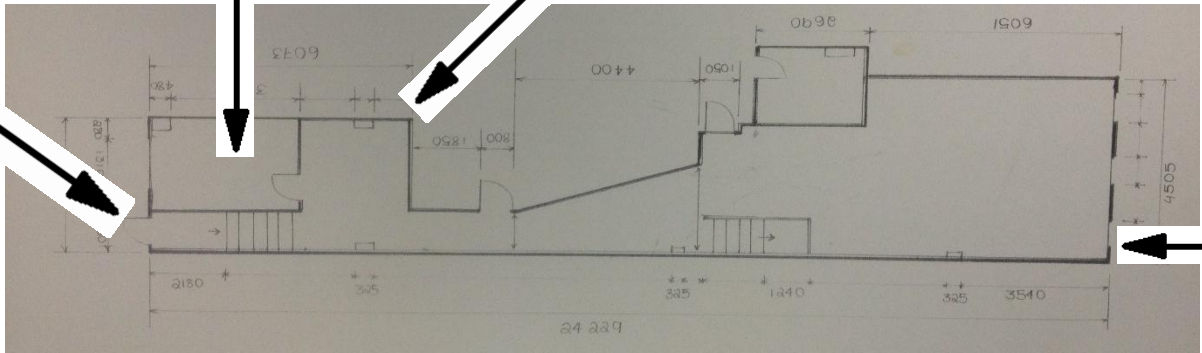
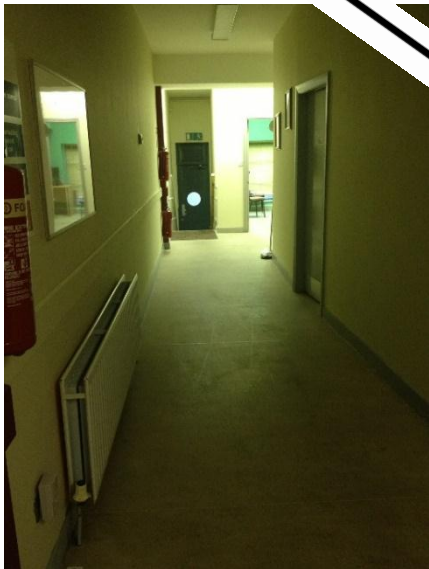
Abrar Alabdan, Anna Mullins, Anna Kasprzak, Olivia O' Hora

# Original floor plan

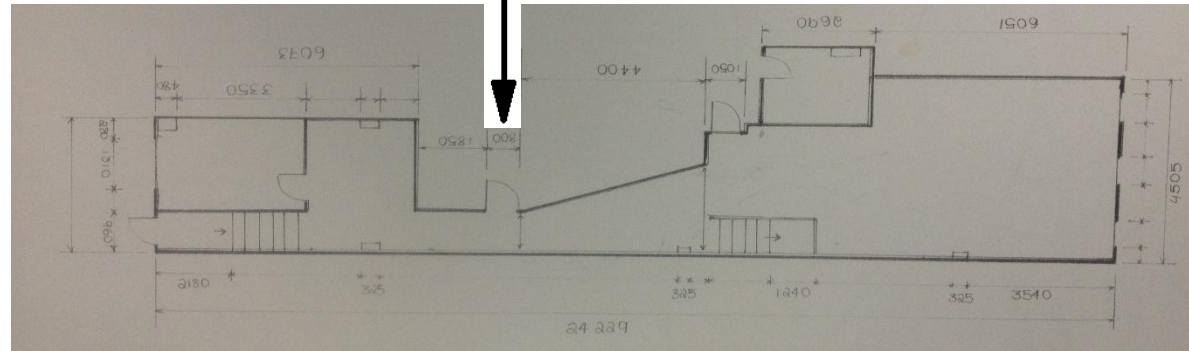




# EXISTING AREA

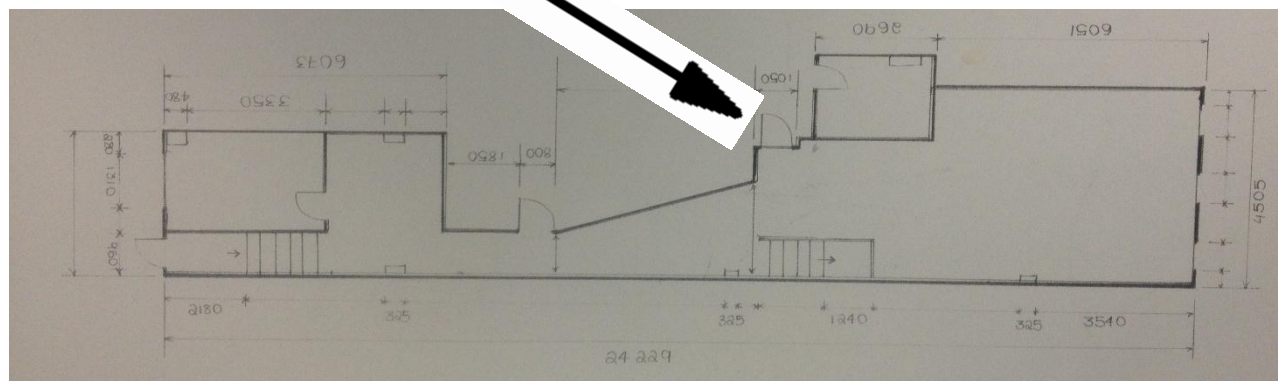


Entrance and Office



Toilets





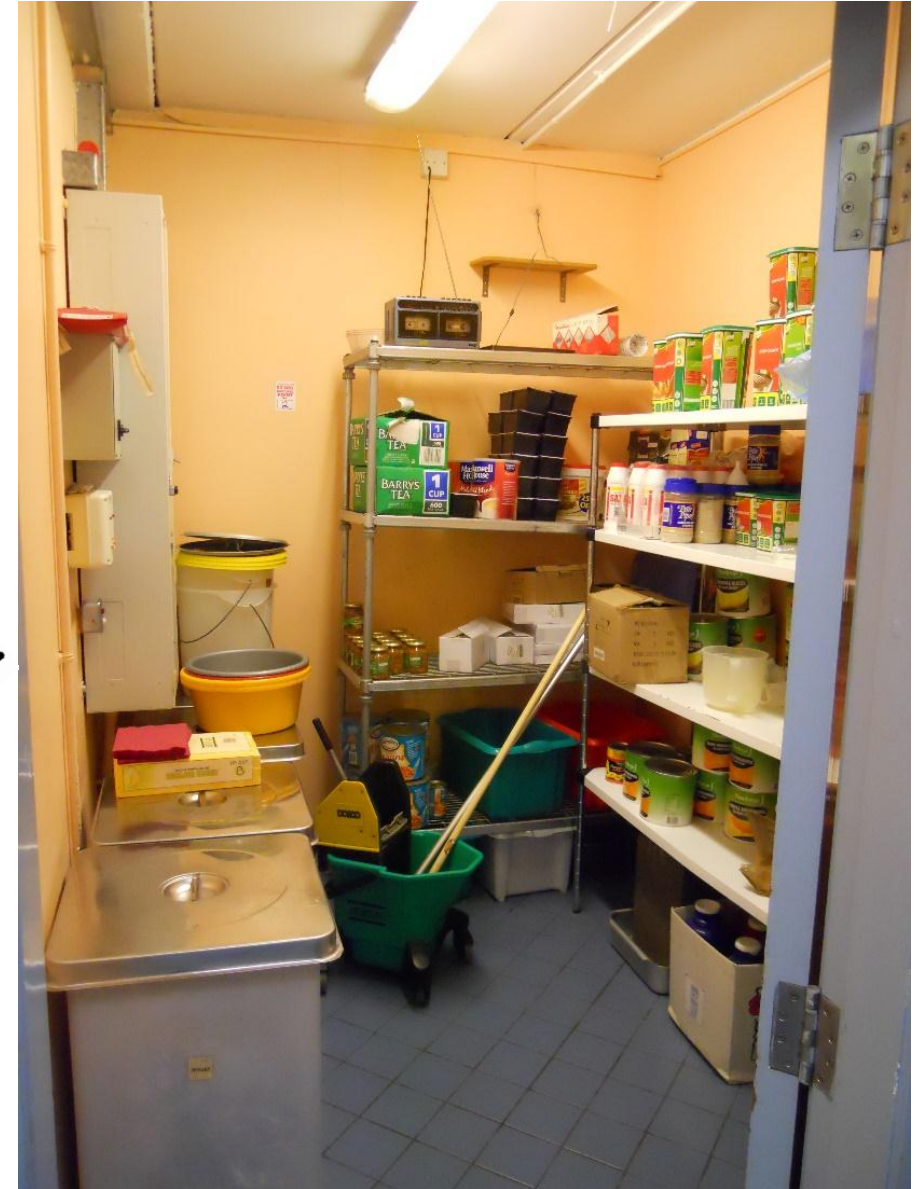
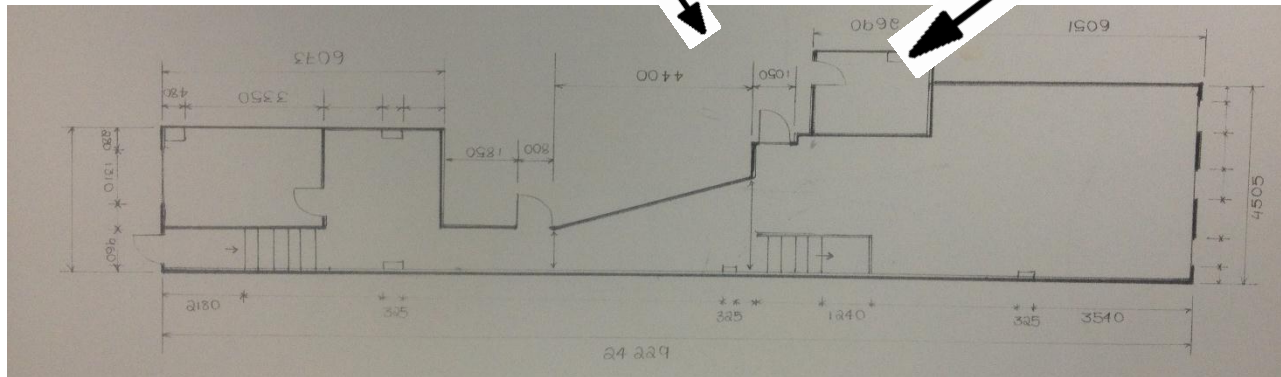
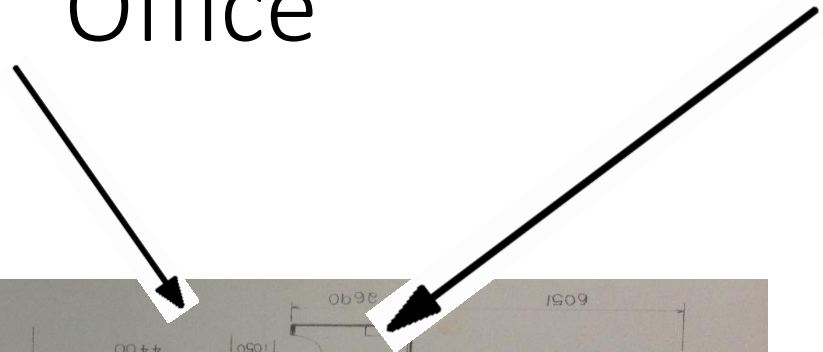
Kitchen





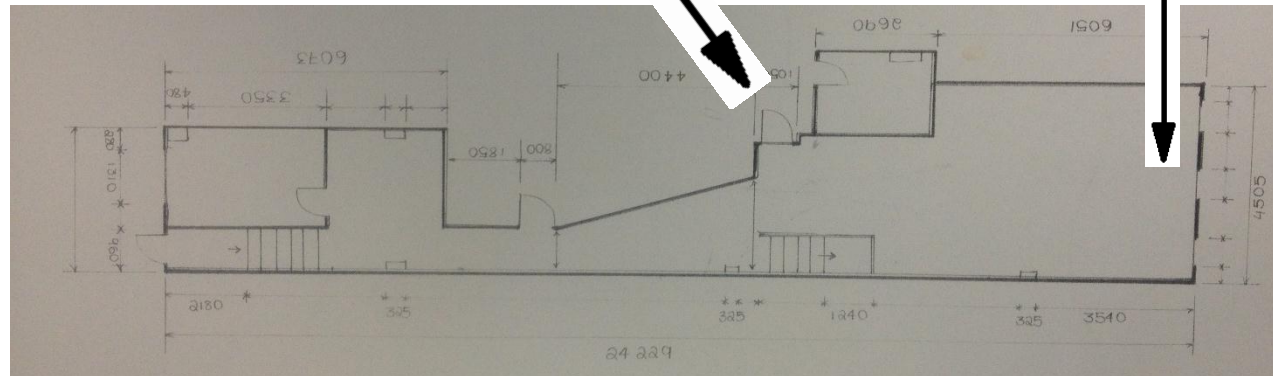


# Storeroom and Office

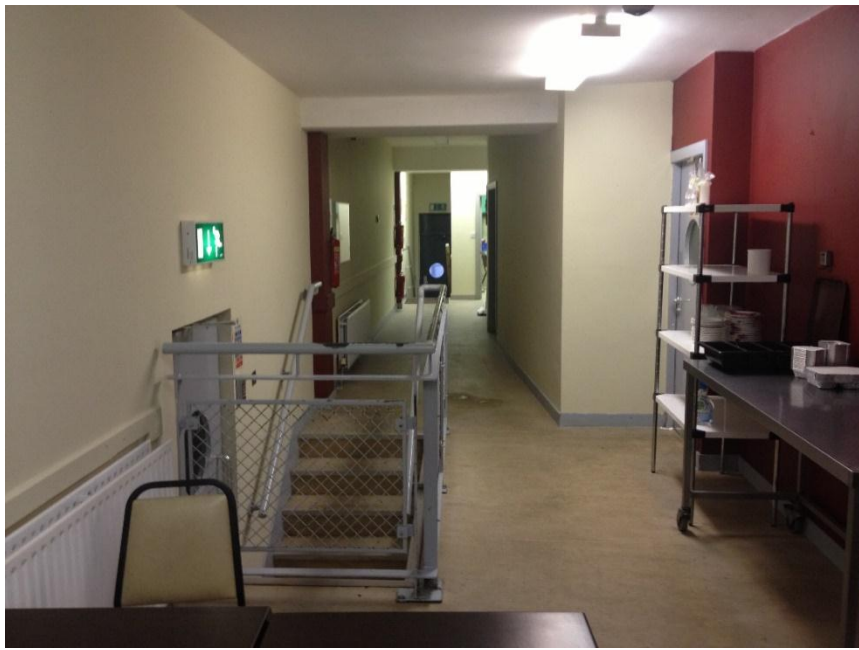




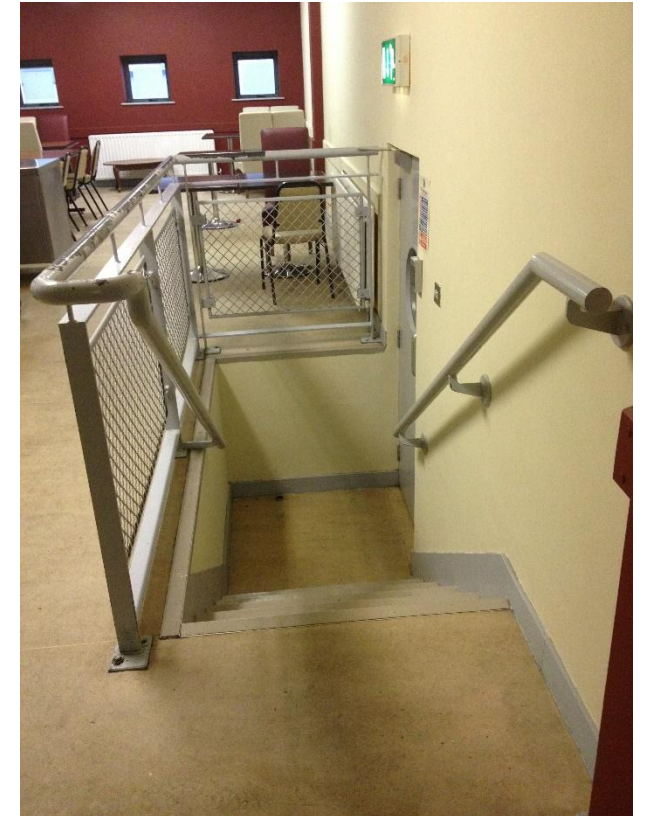
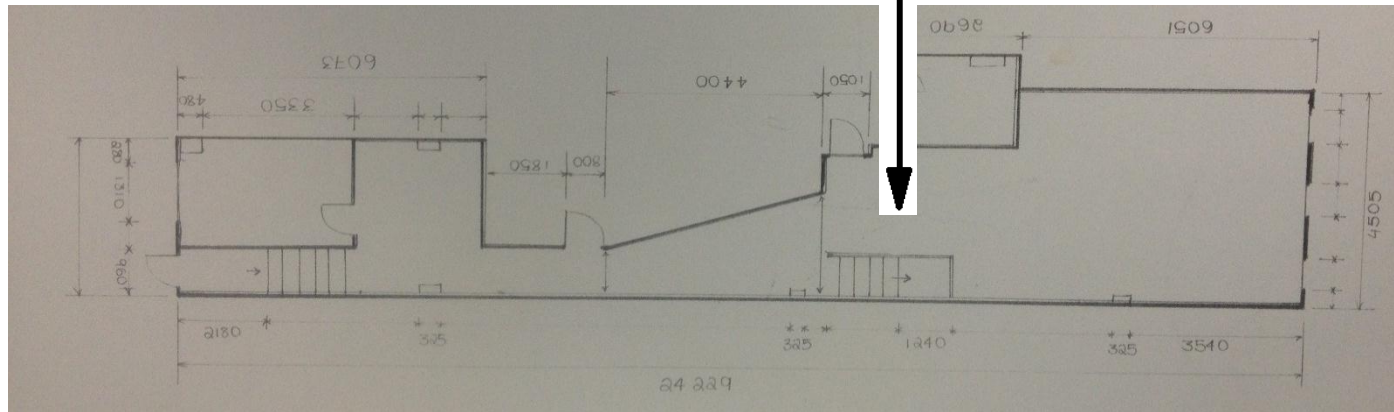
Eating Area







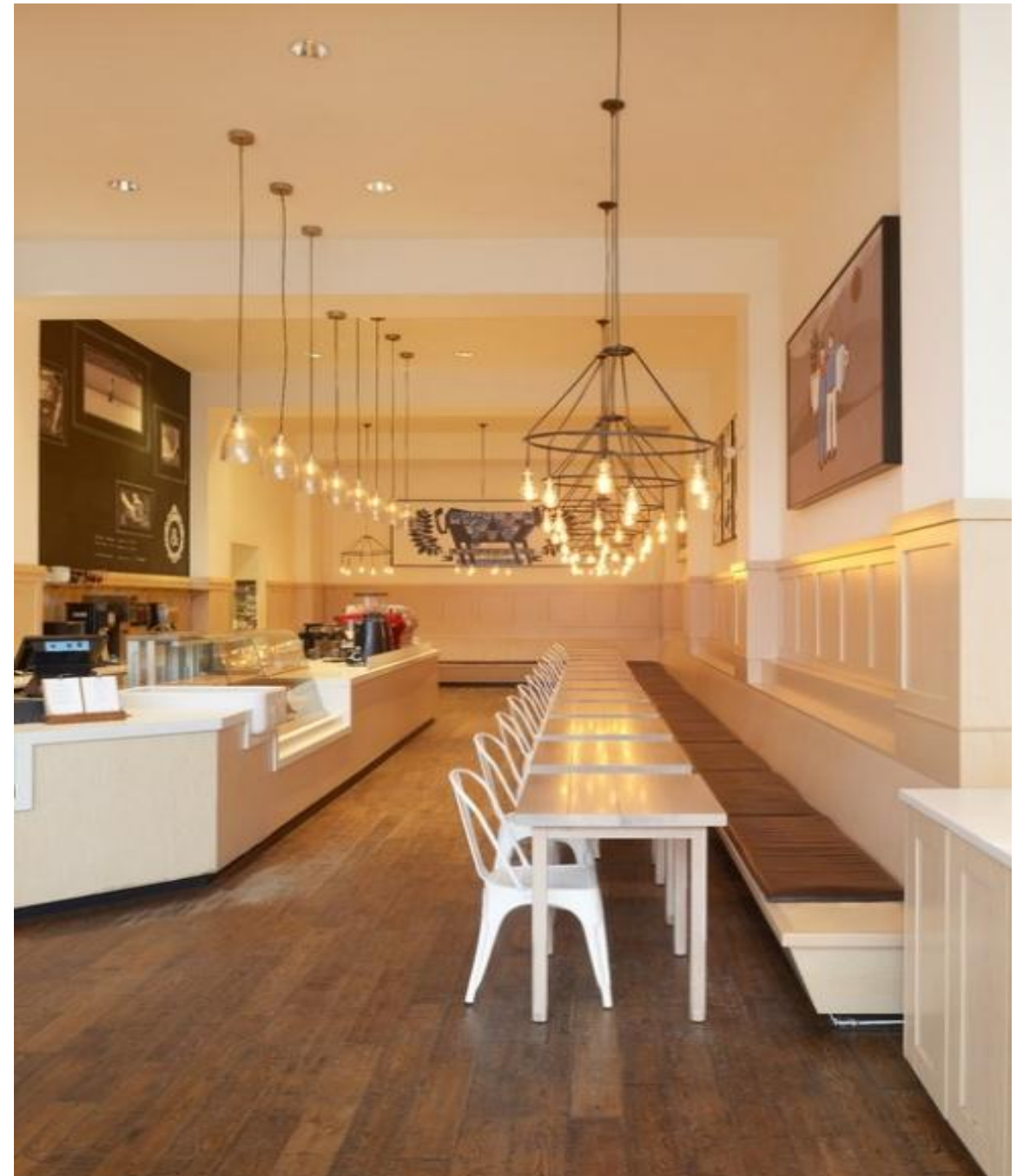
# Eating Area and Fire Exit





# Initial Inspiration

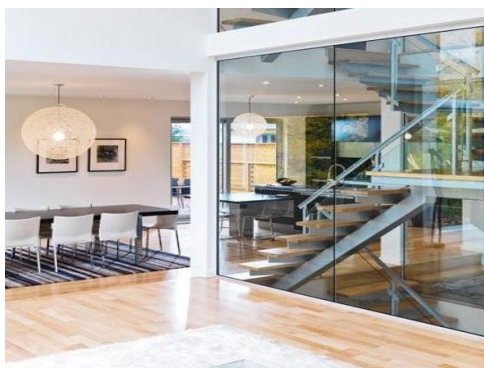
- Two seater tables so can be easily moved for different needs e.g. Christmas dinner
- Pendant lighting with adjustable height option
- Banquet Seating
- Blackboard wall to share personal stories and messages
- Light walls and contrasting dark flooring







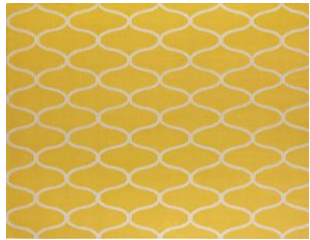
# Mood Board



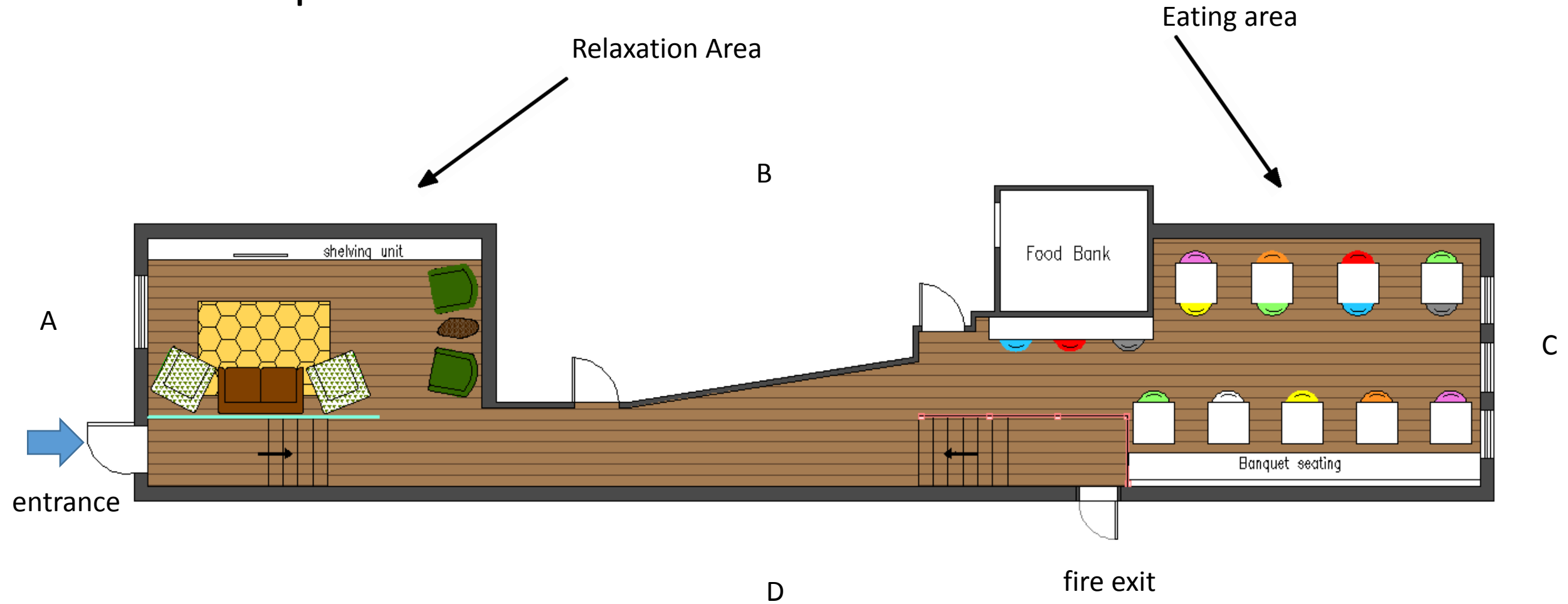




# Sample board

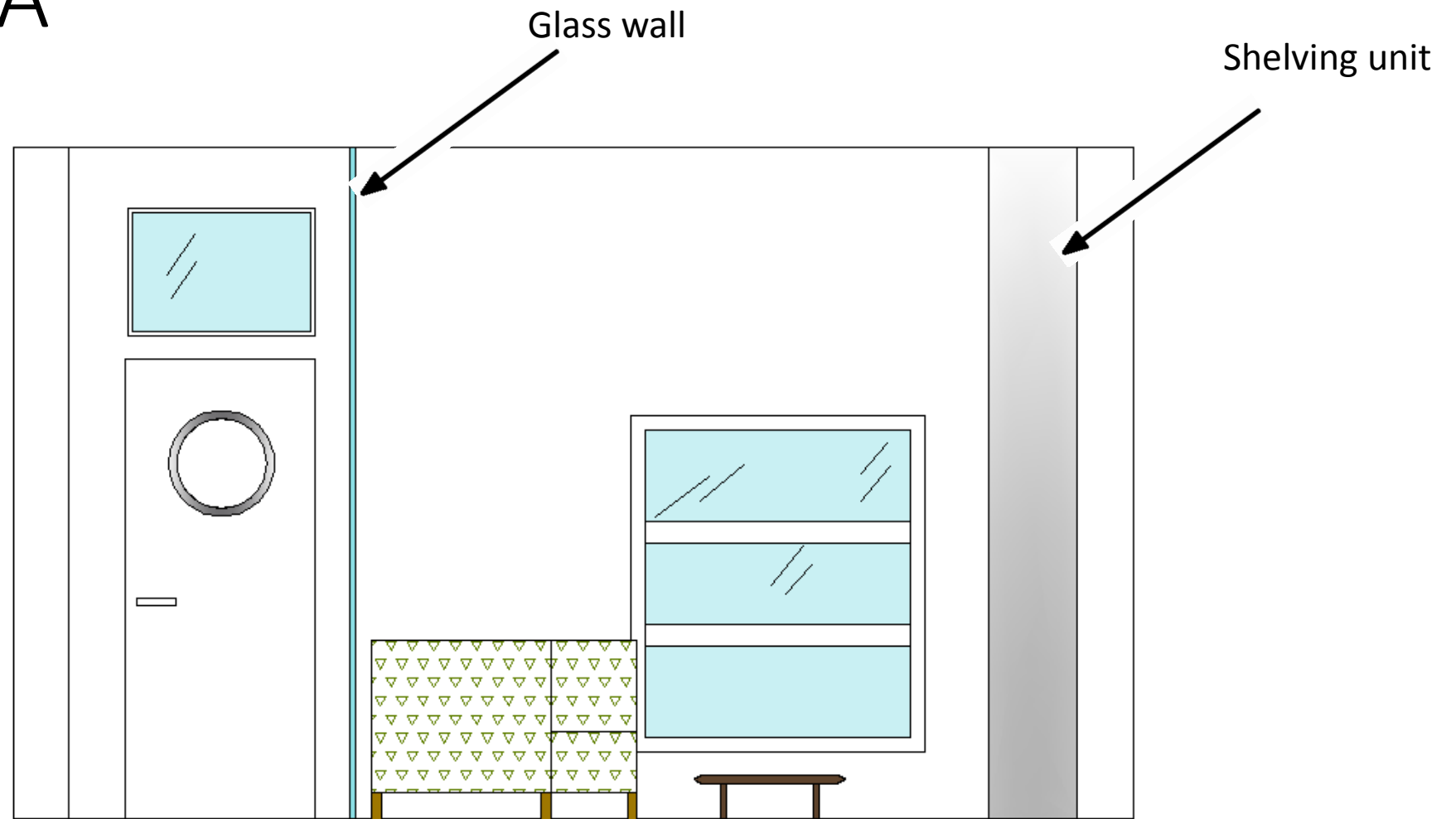


# Floor plan





# Elevation A



# Elevation B



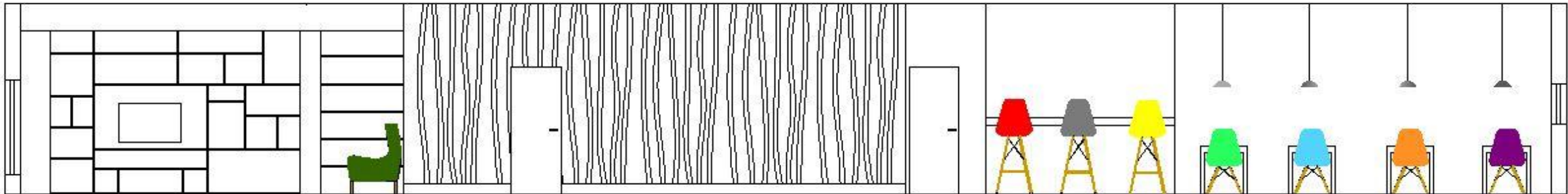
shelving unit



wallpaper

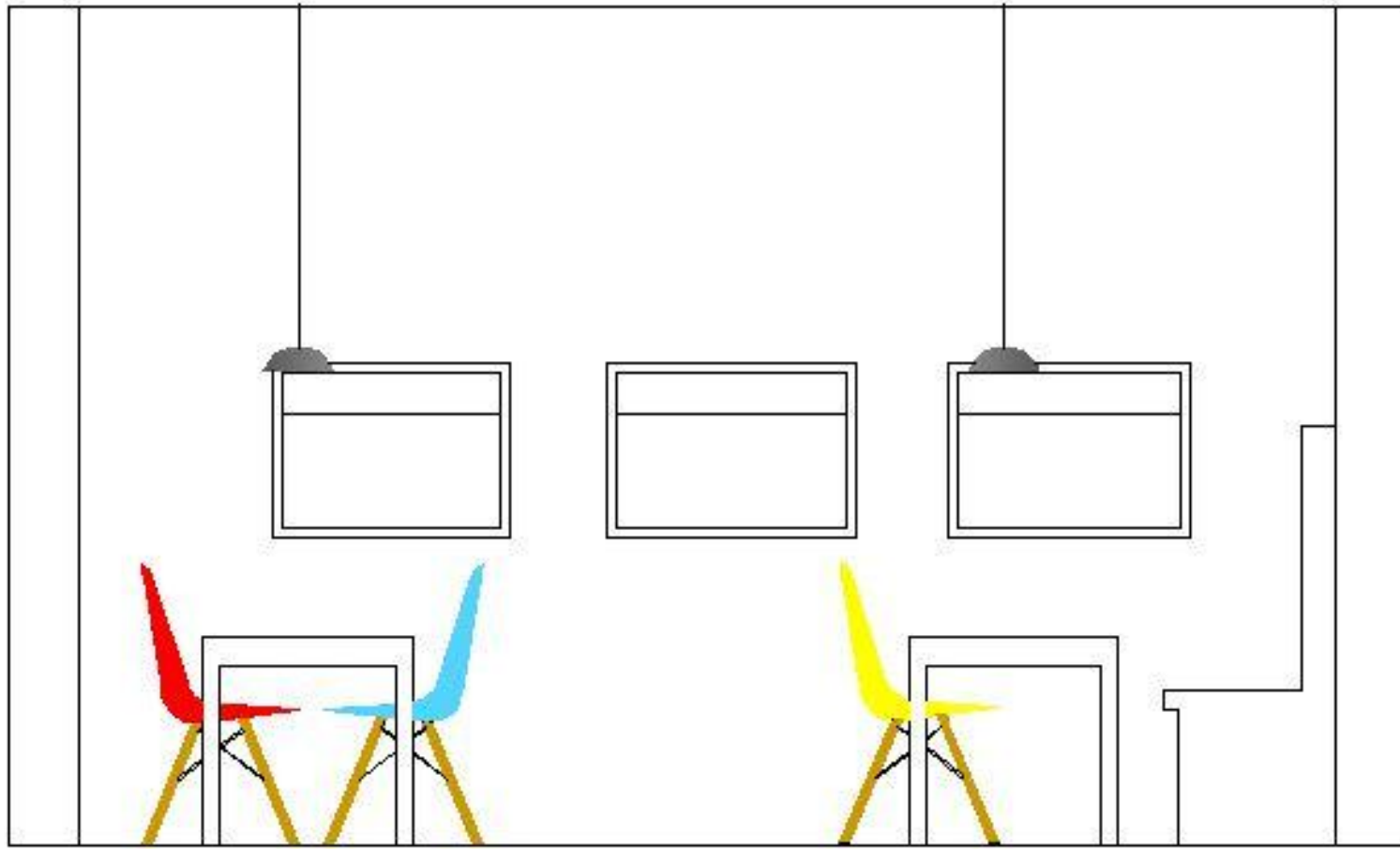


Maser's art

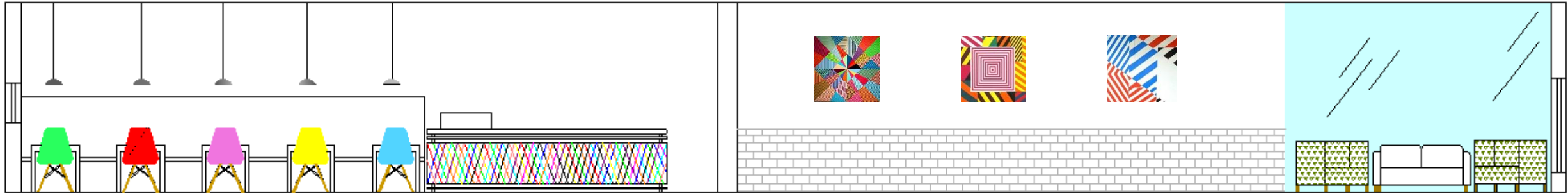




# Elevation C



# Elevation D

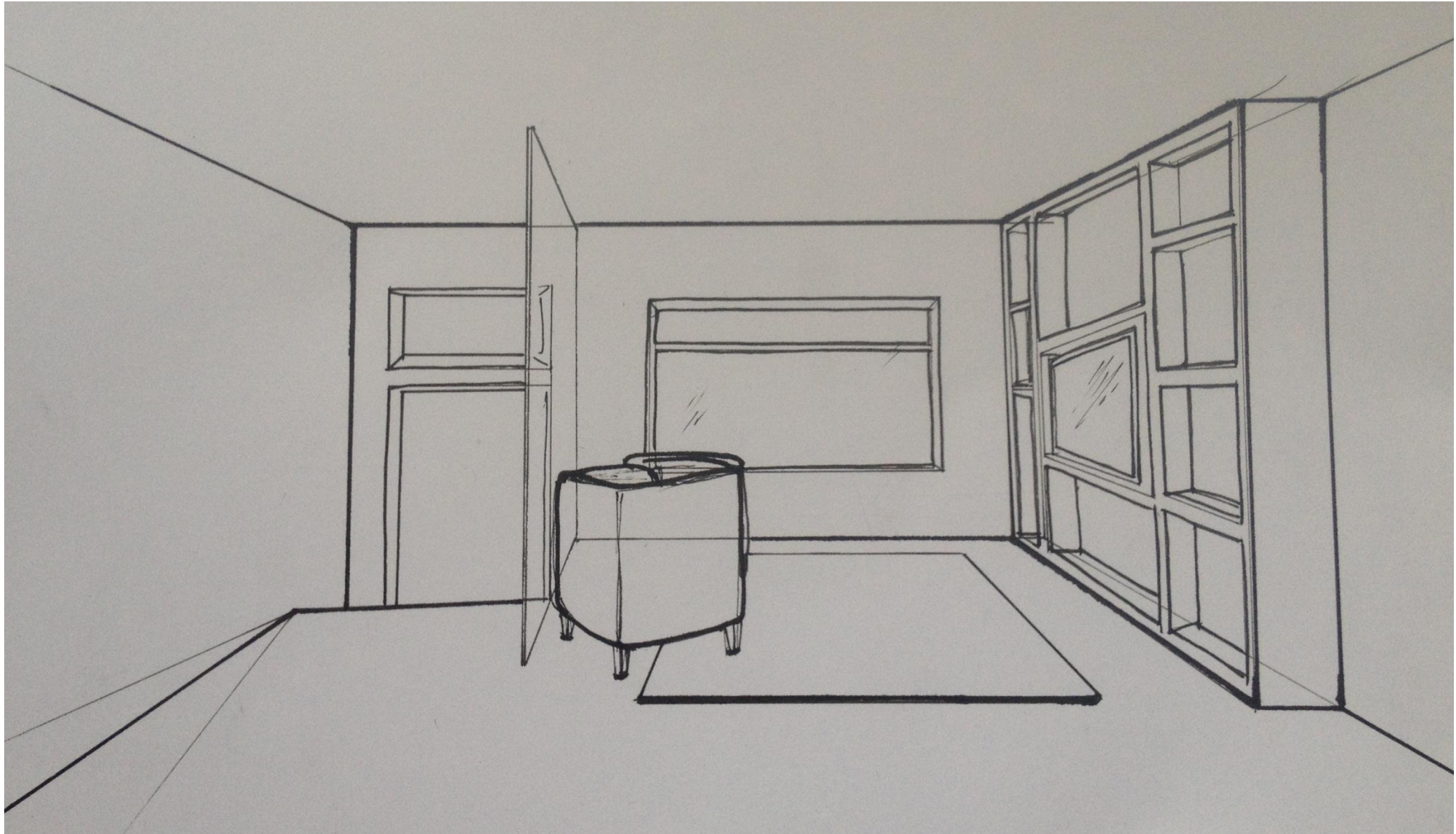




Realistic  
view

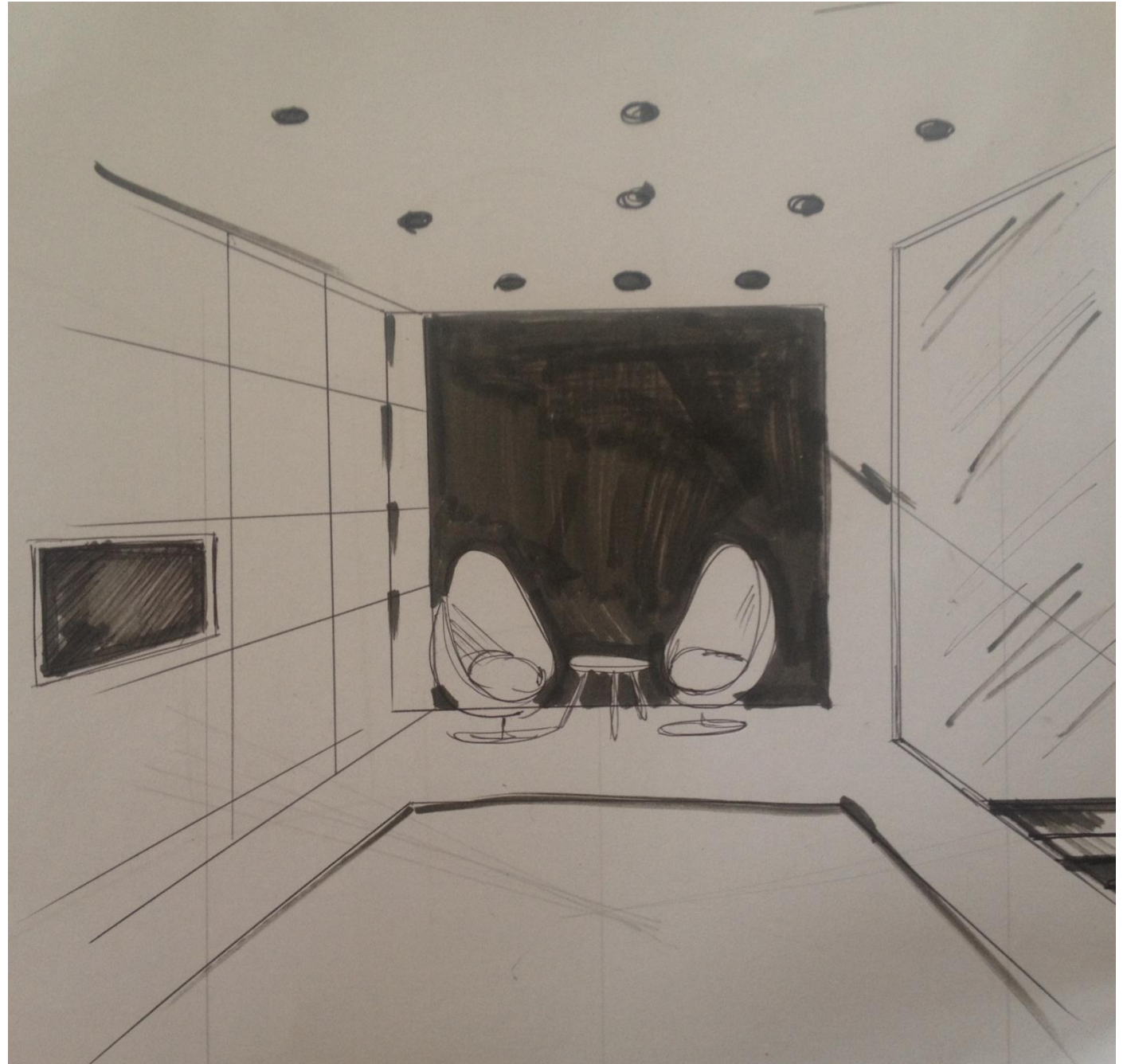


# Perspective view of Relaxation Area





Perspective view



# Exterior Elevation Proposal

