



WORK PLACEMENT

Men's Health Forum in Ireland (MHFI)

Ibrahim Altabaai/ D14124349
WKPL9000
06/May/2015

TABLE CONTENTS

1. INTRODUCTION.....	3
2. Men's Health Forum in Ireland (MHFI)	3
3. Aim of project	4
4. Requirements	4
5. Study area.....	4
6. Data Source	6
7. Methodology	7
8. Software	8
9. Project Resulte	10
10. OUTCOMES.....	11
11. Reflection Component	11
12. Conclusion.....	12
13. References.....	13

A list of acronyms

ITM	Irish Transverse Mercator
KML	Keyhole Markup Language
SQL	Structured Query Language
OGC	Open Geospatial Consortium
MHFI	men's health forum in Ireland
GIS	Geographic Information System
ABSTRACT	OBJECTIVE OF WORK PLACEMENT
QGIS	A Free and Open Source Geographic Information System

1. Introduction

This has led to increased opportunities for work placement and to develop the research links and engagement with higher education institutions, a recruitment mechanism, and the ability to contribute to the overall development of employment-ready graduates. Moreover, employers also outlined some of the main benefits students gained from placements, including opportunities to developing skills, gaining knowledge and cultivating the attitude that is required from graduates across academic disciplines and professional fields.

It is humble privilege to get an opportunity work placement together the The MHFI men health forum in Ireland is a vast organisation with a huge network comprising of a troop of individuals which includes both men and women whose objective is to:

- Understand the key elements for men health.
- Understand the problem of imbalance in the health.
- Fulfil the requirements of their health.
- To enhance the quality of their health service.

as an important issue such that we can contribute a good deed in order to overcome the ill factors and diseases by enhancing the quality of services for health for an individual.

Hence, it is our duty to provide the service to the community through an implementation of what has been studied and an application of expertise in order to Create a mobile-friendly web site that ascertains your current position, finds Points of health serves near your position in order to indicate a total seeking for the development of health aspects in Ireland.

After the first meeting we discussed various points with our partner men's health forum in Ireland (MHFI) for many ideas that seeks to study the penalty from Dublin for the application area. We, hereby declare my moto towards contributing the services of several health aspects

2. Men's Health Forum in Ireland (MHFI)

Men's Health Forum in Ireland (MHFI) is a diverse network of individuals and organisations, men and women, which seeks to:

- promote all aspects of the health and well-being of men and boys on the island of Ireland through research, training, networking, practical initiatives and advocacy.
- identify the key concerns relating to male health.
- increase understanding of these issues.
- tackle the impact of this inequality.

MHFI works on an all-Ireland basis to enhance the health and well-being of men and boys through research, advocacy, training, networking and demonstration projects. The work of MHFI is heavily reliant upon the input of volunteers.

The Forum is registered in the Republic of Ireland as a Company Limited by Guarantee (491368) and is accepted as a charity by the Revenue under Reference Number: CHY19591.(MHFI 2015)

3. Aim of project

Create a mobile-friendly web site that ascertains your current position, finds Points of health serves near your position in Dublin 7 and attaches a marker to each.

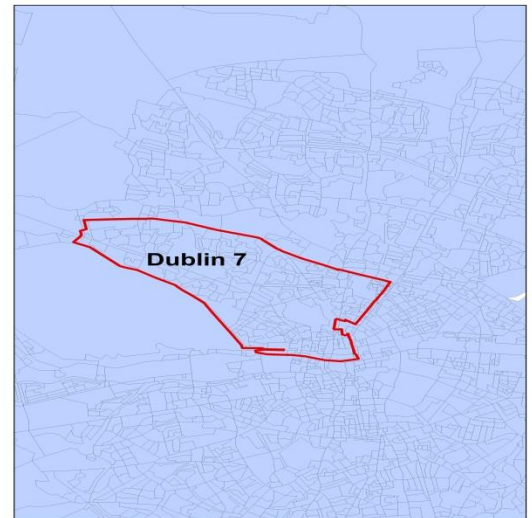
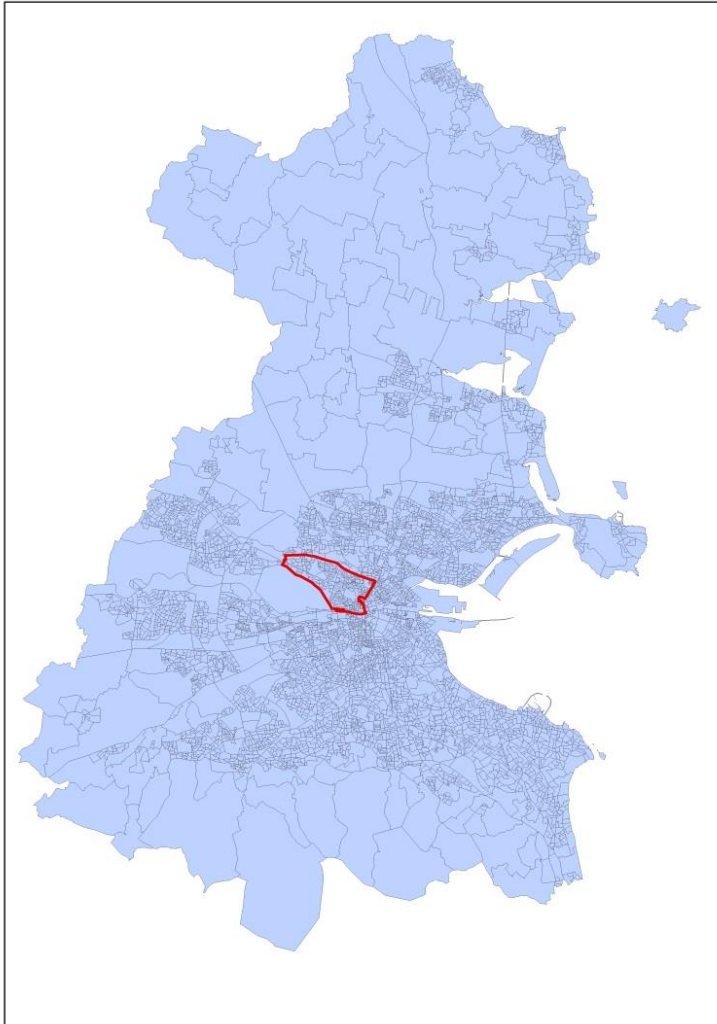
4. Requirements

- Selecting a suitable area of interest.
- Conduct a data gathering , and data cleansing.
- Familiarisation with QGIS.
- Develop a mapping product.

5. Study area

Dublin 7 is North West of Dublin city centre. The area includes Smithfield, Stoneybatter, Arbour Hill, Broadstone, Cabra and Phibsboro. Local amenities and focal points include the Four Courts, Old Jameson Distillery, which shows how the famous whiskey is made, the Bridge Art gallery, Mill Race gallery and Collins Barracks which is home to the National Museum of Ireland. Public transport in Dublin 7 includes the Luas (Red Line) and Dublin Bus. (Dublin7 2015)

In order to propose the application and retrieve the idea of my project it was agreed to focus on a particular data and represent them from a huge collection of data which is available and diversified in Dublin 7 and look forward to learn the application on this agreement.



6. Data Source

The following tabular lists all the original datasets used in the project.

Sr. No.	Layers	Type	Source
1	mental_health	Points	www.casemanagementguidebook.ie
2	addiction_services	Points	www.casemanagementguidebook.ie
3	health_services_7	Points	www.hse.ie
4	education_job_training	Points	www.casemanagementguidebook.ie
5	dublin_7	Polygon	DIT (GIS lap)
6	accommodation_services	Points	www.casemanagementguidebook.ie
7	legal_services	Points	www.casemanagementguidebook.ie
8	landuse	Polygon	DIT (GIS lap)
9	Bus	Points	www.dublinked.ie
10	<i>Population</i>	Polygon	www.cso.ie
11	Building	Polygon	DIT (GIS lap)

7. Methodology

- Data sets from various sources on health service in Dublin 7

The methodology is performed and implemented in the project is spatial data collection from various different sources, where the major proportion of natural Excel or spreadsheets are represented in the form of general information that covers entire Dublin or Ireland in general, where it was converted which gives us our site and location of coordinate system on the map and unifies the project system to facilitate the method of dealing between the data.

- Creation of spreadsheets
This can be done by using the data set up tables through which we can enter the particular data which contains a specific data type which uses the name, address, telephone number as the identification source by using the coordinates of the site and then show their demotion in GIS program by converting them into a ship carrying Weil dropping Ireland system.
- Conversion of spreadsheets to shapefiles using ArcGIS and QGIS
After our data had been imported it was in the coordinate reference system of Irish Grid, As a first step, all data layers were uniformly projected as to convert the data in ITM.
- Importing and export data using pgAdmin
pgAdmin is the most popular and feature rich Open Source administration and development platform for PostgreSQL, the most advanced Open Source database in the world.
- create a new Database in pgAdmin
- Adding the PostGIS Extension to the Database We need to add the PostGIS extension to the database to enable all the spatial functionality provided by PostGIS.
- Importing data (shapefile layers) into pgAdmin, And then convert it to a format SQL to recognize it phpPgAdmin program.
- Importing data (SQL) into phpPgAdmin.
- Creation of workspace and stores in GeoServer
- Coding the web map

8. Software

Several programs were used during the study of this project which is a direct reflection of which has been studied till now in order to seek the link of the program and later exit the outcome by serving the partner by putting the upcoming and new knowledge by linking the programs by our research till now.

ArcGIS has contributed a lot of data such as a person's name, address and telephone number and type in which they are used during the process of data collection. The GIS data obtained is also the data bearing site with respect to our location in map such as in Ireland where the data analysis has projected a formula popularly known as shapefile in order to identify the usage of data conversion and using them appropriately. Also the web map creation requires a lot of effort and deal with the corresponding software which is the first and basic step of data conversion which has given PostGIS WGS projection system for handling them easily with the help of maps by OpenStreetMap which later converts them into SQL.

Software ware, which was used in the project:

1. Excel

Excel is a software program capable of creating and editing spreadsheets that are saved with a .xls file extension. For example, with a spreadsheet you could create your own payroll, balance your check book, organize a large amount of data in an easy to read format, and much more. This is done by adding, subtracting, multiplying, and dividing the values in the spreadsheet to view overall totals and create graphs based on that data. (Excel 2015)

2. Openstreetmap

OpenStreetMap is an initiative to create and provide free geographic data, such as street maps, to anyone. The OpenStreetMap Foundation is an international not-for-profit organization supporting, but not controlling, the OpenStreetMap Project. (OpenStreetMap 2014)

3. Google Earth

Google Earth is a map of the world on steroids. You can zoom and glide over stitched together satellite photos of the world.

4. ArcMap

ArcGIS brings together maps, apps, data, and people to make smarter decisions and enable innovation in your organization or community

5. QGIS

QGIS is an open source GIS software package that can be freely downloaded. Anita Graser provides an overview to the QGIS ecosystem which includes a desktop GIS component, cloud hosting, and mobile application. QGIS provides compatibility for a variety of GIS vector and raster file types (such as shape files, KMLs, and GeoTIFFs). (QGIS 2012)

6. PostGIS

PostGIS is a spatial database extender for PostgreSQL object-relational database. It adds support for geographic objects allowing location queries to be run in SQL.

7. Pgadmin

pgAdmin is the most popular and feature rich Open Source administration and development platform for PostgreSQL, the most advanced Open Source database in the world.(pgAdmin 2014)

8. Phppgadmin

phpPgAdmin is a web-based administration tool for PostgreSQL. It is perfect for PostgreSQL DBAs, newbies, and hosting services.(phpPgAdmin 2013)

9. GeoServer

GeoServer is a Java-based software server that allows users to view and edit geospatial data. Using open standards set forth by the Open Geospatial Consortium (OGC), GeoServer allows for great flexibility in map creation and data sharing.(GeoServer 2014)

10. ~okeanos global

It means that you can build your own computer, always connected to the Internet, without worrying about hardware failures, spaghetti cables, connectivity hiccups and software troubles.(~OKEANOS 2011)

11. Notepad++

9. Project Result

Result of the work of this project a mobile-friendly web site that ascertains your current position, finds Points of health serves near your position in Dublin 7 and attaches a marker to each.

<http://83.212.127.79/assignment/assignment.html>



10.OUTCOMES

There are a lot of skills acquired in the application of this project:

- The ability to convert data from a variety of sources and to deal with them in the GIS program on the basis of one.
- The ability to maintain data and archiving properly and ensure quality control.
- Always Information Systems supports large organizations, but through this project and having the opportunity to interact with clients do not belong to large organizations in the piece helped establish.
- Work and learn about the QGIS program.
- We have developed several innovative ideas by an interaction with the partners.
- We have understood the importance of critical areas and issues regarding the health services.
- We are now enabled to move forward to resolve the problems that are being faced in this issue.
- We have got the ability to develop a new environment for health care and services in order to overcome the diseases which is a common problem in the current trend.
- We have developed strong self-confidence to provide better services in GIS and provide them accordingly.

11. Reflection Component

Work with a community partner on this project?

- There are many benefits and advantages of working with a community partner.
- There is added value in working with each other.
- The benefits of effective partnerships show experience and translate what we reached knowledge and experience .
- Effectively communicate with the client in a professional manner.
- Analyze the client's requirements and needs.
- Design and administrate a personal or enterprise geo databases.
- Geo-process and analyze the geospatial data.
- Produce Wep map.
- The organization involves the health promotion and has links to the HSE.
- It is a great opportunity for us to work on a real life project and with a community partner such.

Advancement that done during the subscription period:

- ability to make up partnership.
- developed the competent spirit of interaction in order to explain the tasks.
- obtained the ability of leading the task independently.
- got the knowledge of enhancing the service innovatively.
- Self-reliance and become independent.
- Competent and developed sportive spirit.
- Innovative and become more interactive.

Technical competence

- obtained the knowledge of GIS.
- gained the abundant knowledge of working of various software programs.
- obtained the ability to resolve these programs if they go wrong.
- Create a mobile-friendly web site.

communications and interpersonal skills :

- We have developed very good interactive skills.
- We have developed the ability to convince the partners easily.
- We have projected the issue significantly to understand the situation easily.
- Ability to solve problems, to work independently and as part of a team, and to organize time.
- We have become more self-confident and more willing to make an approach.
- We have developed our will power.
- We have developed leadership abilities.
- We can now understand the issue more effectively.
- We can understand the critical areas of situation.
- Flexibility
- Time management

12. Conclusion

It is a great opportunity for us to work on a real life project and with a community partner such as the charity, and indeed to be able to draw on the support and knowledge of DIT's Community Links personnel.

13. References

- MHFI 2015 , Welcome to the Men's Health Forum in Ireland, viewed May 2015 < <http://www.mhfi.org/>>
- Dublin7 2015 , Dublin Area Guide, viewed 2015 < <http://www.myhome.ie/dublin/dublin>>
- Excel 2015 , Excel, viewed April. 2015 < <http://www.computerhope.com/jargon/e/excel.htm>>
- OpenStreetMap 2014 , OpenStreetMap Foundation, viewed 25 November 2014 < https://wiki.osmfoundation.org/wiki/Main_Page>
- QGIS 2012, Installing QGIS on the Mac, viewed MAY 29, 2012 < <http://www.gislounge.com/installing-qgis-on-the-mac/>>
- pgAdmin 2014 , pgAdmin v1.20.0, viewed 2014.12.19 < <http://www.pgadmin.org/>>
- phpPgAdmin 2013 , What is phpPgAdmin?, viewed 2013/04/15 < <http://phppgadmin.sourceforge.net/doku.php>>
- GeoServer 2014 , What is Geoserver?, viewed 2014 < <http://geoserver.org/about/>>
- ~OKEANOS 2011 , SO, WHAT IS THIS ~OKEANOS GLOBAL THING ?, viewed 2011 <<https://okeanos-global.grnet.gr/about/what/>>