

MSc in Geographic Information Science (Full-time & Part-time)



The School of Surveying and Construction Management is pleased to present a new MSc programme in Geographic Information Science. It is offered from September 2013 in both full-time and part-time modes. The programme places a strong emphasis on Information Technology, Programming and Web development, areas which have been consistently identified as critical to the need of the geospatial industry. The combination of strong IT skills with excellent spatial analysis capabilities will give graduates a competitive advantage in today's marketplace.

Calendar Full-time mode

September to December: Six modules.

January to October: Six modules plus Research project and dissertation.

Calendar - Part-time mode

Year One

September to December: Three modules - one evening and day per week

January to May: Three modules - one evening and day per week

Year Two

September to December: Three modules - one evening and day per week

January to October: Three modules - one evening and day per week plus Research project and dissertation

Topics covered

Semester I

Fundamentals of GIS, Spatial Data Acquisition, GI Project Management
Web and User Interface Design, Spatial Databases and Introduction to Programming

Semester II

Advanced GIS, GIS Modelling, Industrial Work Placement
Web GIS, Programming for GIS and Advanced Spatial Data Management

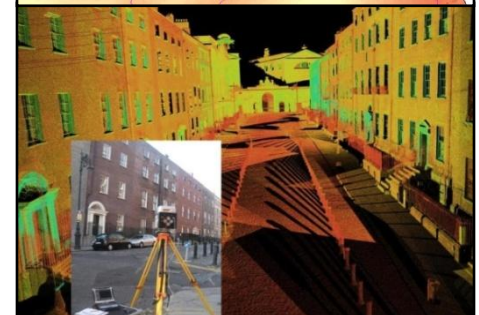
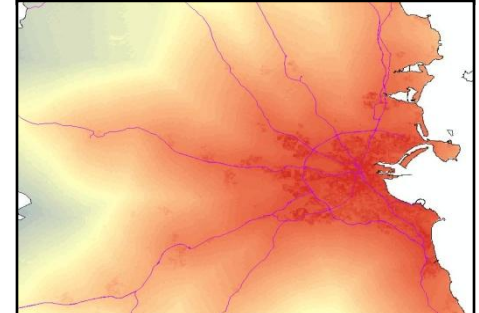
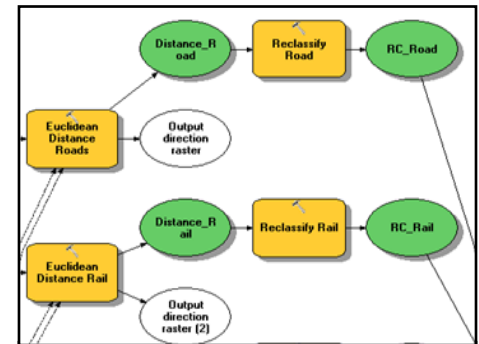
The Programme

This conversion programme enables graduates from a related discipline to acquire a qualification in Geographic Information Science at Postgraduate Diploma and Masters Level.

Having studied a particular degree you may decide that you wish to change or enhance your career path by undertaking this new conversion programme at DIT. Applications are invited from graduates of Engineering, Geography, Science, Geomatics, Archaeology, Planning, Environmental Science, Computing and Information Technology but graduates from other discipline areas are encouraged to apply.

The part-time mode of the programme may be particularly attractive to mature candidates and those currently in employment who wish to extend their knowledge and qualifications in this evolving and exciting discipline area.

<http://www.dit.ie/postgrad/programmes/dt9419dt9420pgdipmscineograp hicinformationscience/>



Spatial Information Sciences Group

School of Surveying & Construction Management

DIT, Bolton St., Dublin 1

Details and expressions of interest:

School Administrator:

kelly.nash@dit.ie

+353-1-4023676