

JSTOR Music Database

Access JSTOR Music from DIT library web page: <http://www.dit.ie/library/databases/>. Scroll down the A-Z list to **JSTOR Music** and select it.

To access JSTOR Music off campus, you must have a PIN number. See library guide titled "Accessing DIT electronic resources and your library account from home". Alternatively, see PIN under P in the Library A-Z guide: <http://www.dit.ie/library/librarya-z/pin/> for instructions.

JSTOR describes itself as offering "a high-quality, interdisciplinary archive to support scholarship and teaching." As well as providing academic journals, select monographs and "other materials valuable for academic work" are provided. Within DIT we subscribe specifically to the music archive. The entire database is fully searchable, "includes high-quality images", and is interlinked by millions of citations and references.

Moving Wall

Journals in JSTOR have "moving walls" that define the time lag between the most current issue published and the content available in JSTOR. The majority of journals in the archive have moving walls of between 3 and 5 years, but publishers may elect walls anywhere from zero to 10 years. However, there are exceptions to this.

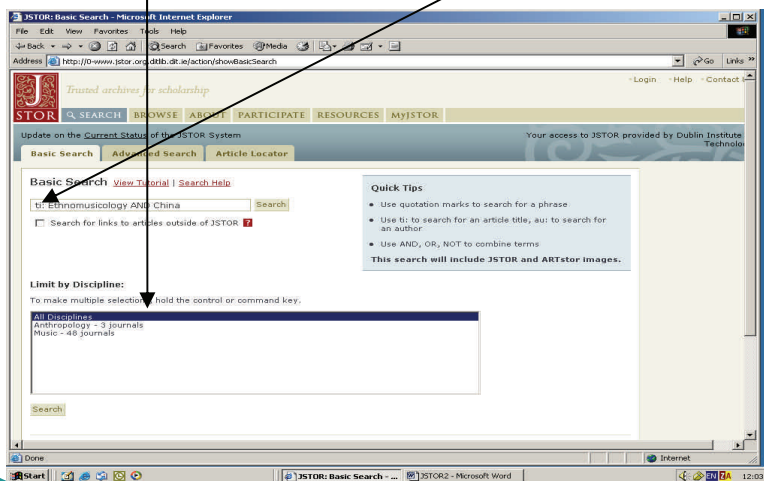
Searching JSTOR Music

When you login to JSTOR music there are two ways of viewing the JSTOR archive: [searching](#) and [browsing](#). The search and browse options are located on the menu bar at the top of the screen. The [Browse](#) option is useful in order to view the full range of journal titles available for viewing in JSTOR. Choose Browse in order to go to the lists of all the journals available in JSTOR.

There are 3 options to choose from within the searching option: [Basic](#) and [Advanced](#) searches or [Article locator](#).

To enter a search into the [Basic search box](#) type in the keyword, in this example: **ti: ethnomusicology and China** to search for references which contain both the terms ethnomusicology and China within the title field.

Option to tick box to expand the search outside of JSTOR. Also you can restrict your search to specific music journals.



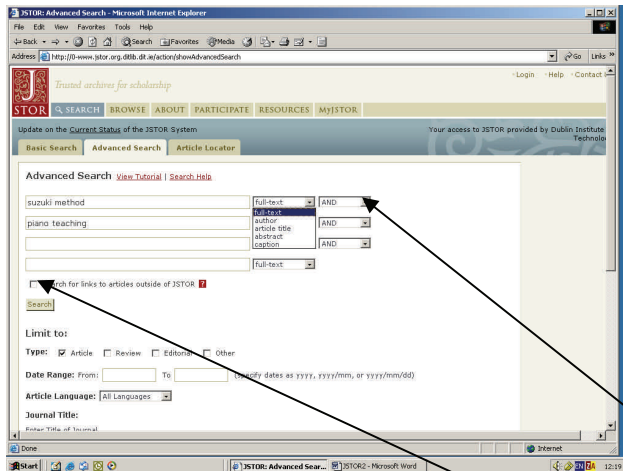
**MUSIC AND DRAMA
LIBRARY, DIT**

Lower Rathmines Road
Dublin 6

Phone: (01) 402 3461/3462
Fax: (01) 402 7859
E-mail: RMH.Library@dit.ie

The **Advanced** search option allows you more flexibility in customising your search. For example you can combine keywords with connector terms, **AND**, **OR** or **NOT** to make your search more specific. In addition searches can be limited to retrieve specific document types, articles or reviews for example. In the following search the terms **Suzuki method** and **piano education** are entered in the search boxes. Click on the down arrow adjacent to right hand box to select relevant connector term **AND** as you want to retrieve references which contain both terms **Suzuki method** and **piano education**.

When you have retrieved your search results, click on **Select images in JSTOR** if you wish to view illustrated articles. If you wish to save search results insert a tick in the box adjacent to relevant article/s. Click on Save citation (which requires you to set up JSTOR account) See screen shot of Advanced search below.



If you retrieve too many search results you can limit your search by restricting your search to particular fields, for example **author**, **article title** etc by clicking on the down arrow. Also you can expand your search to search articles outside of JSTOR by ticking the relevant box.

Article Locator

Choose Article Locator when you want to search a specific journal reference which you have.

Options for output of results in JSTOR.

Save citation(s) (Requires login)

Export this Citation

Some useful tips for searching more effectively in JSTOR:

1. Choose **Advanced** search for more flexible searching, with more options for limiting your search results.
2. Use quotation marks to search for a phrase.
3. Use Boolean operators (connector terms) **AND**, **OR**, and **NOT** to combine terms.
4. View the online tutorials available with JSTOR to learn more about specific searches.

NOTE: you need to register for a MYJSTOR account in order to save citations, email citations or export citations to bibliographic software.

Any enquiries about content of this guide to : Kathy.egan@dit.ie Ext. 3462